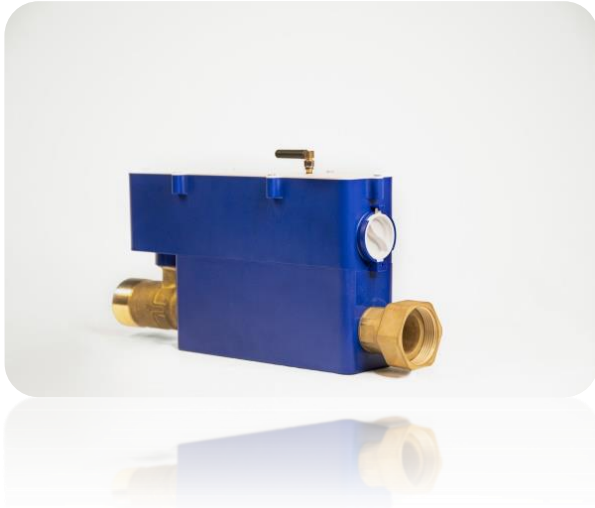


Module Dn 40, technical sheet



The module is to install in your plumbing system. It monitors and controls the distribution of water through the pipe.

The flow measurement with an electromagnetic sensor informs you of any water flow.

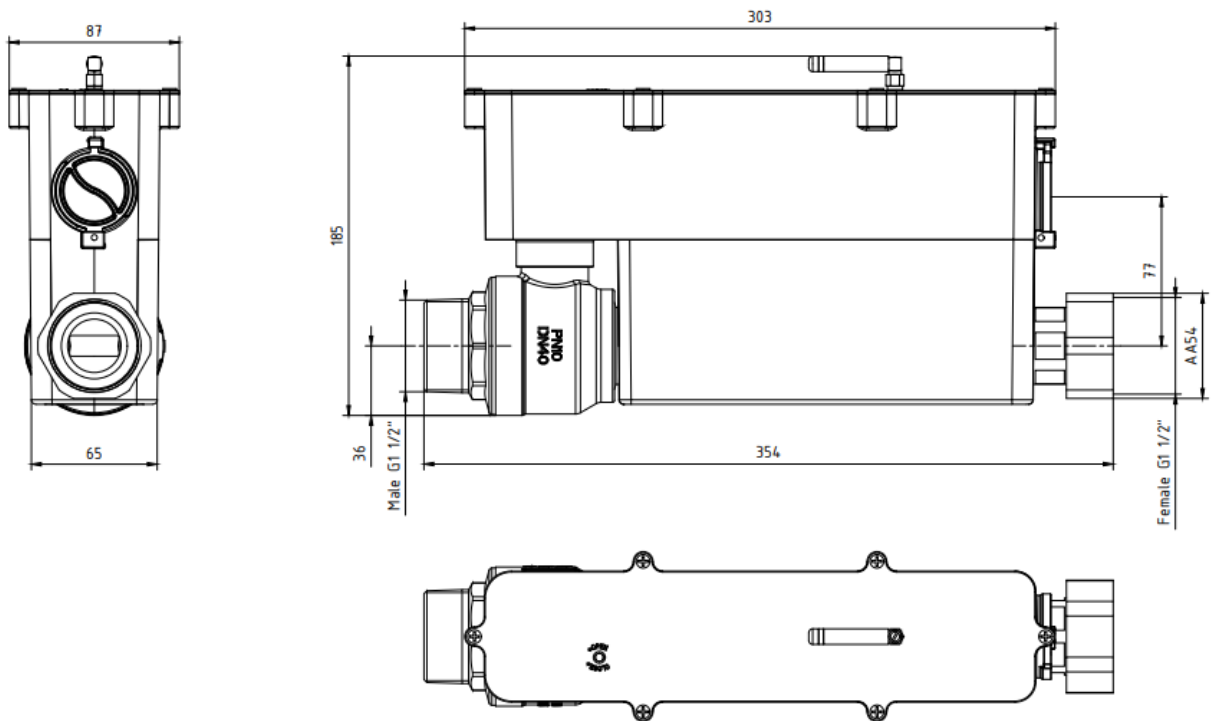
The communication between modules is done via the Box, the brain of the system.

Model		Module Dn 40
Item number		1 4 3 0 2 2 4 0
Characteristics and performance		
Diameter connection	Dn	40
Water inlet connection	Inch	Louse nut 1' 1/2
Water outlet connection	Inch	Male thread 1' 1/2
Suitable for	Dn	32, 40, 50
Minimum flow detection	Litre/minute	0,25
Maximum flow detection	Litre/minute	300
Minimum operating pressure	Bar	0,2
Maximum allowable pressure	Bar	10
Ambient operating temperature	°c	0° à 60°
Water temperature	°c	2° à 80°
Operating guarantee	M3	6000
Electrical data		
Power supply	Ph-V-Hz	Lithium-ion battery
Waterproofing	Class	IP65
Size / weight		
Product size	mm	354 – 185 – 87
Product weight	Kg	3,120
Packaging size	mm	380 – 210 – 100

Module Dn 40, diagram

MY WATER MANAGER

ELECTRONIC FLOW CONTROL SYSTEM(DN40)



MARCH 2021